

Conair Portable USB Rechargeable Water Jet

美康雅便攜式USB充電水牙線



INSTRUCTION  
BOOKLET  
使用說明

CONAIR®

CWJ182H

便攜USB充電款 水牙線

產品描述：

便攜式水牙線系統可增強口腔衛生，清潔齒間殘渣，有效減少齒縫間的牙菌斑，強化牙齦健康，預防牙結石的產生。

重要安全指示

當使用電器時，尤其有兒童在場，應小心及遵守以下安全指示。產品外的聚乙烯袋或包裝袋可能有危險。為避免發生窒息風險，應當將包裝袋放到嬰兒和兒童接觸不到的地方。包裝袋不是玩具。

使用前請細閱使用說明

電器應遠離水源

安全預防措施

警告：切勿在可能被水打濕的地方或有可能落入水盆或其他有水容器的地方使用或放置電源適配器。應當保持電源適配器乾燥，除非另有說明。

本機可在打開的水龍頭下進行清洗(清洗前請確保關好充電接口密封塞)

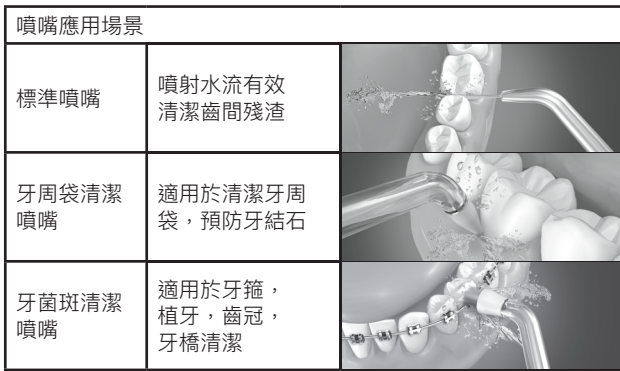
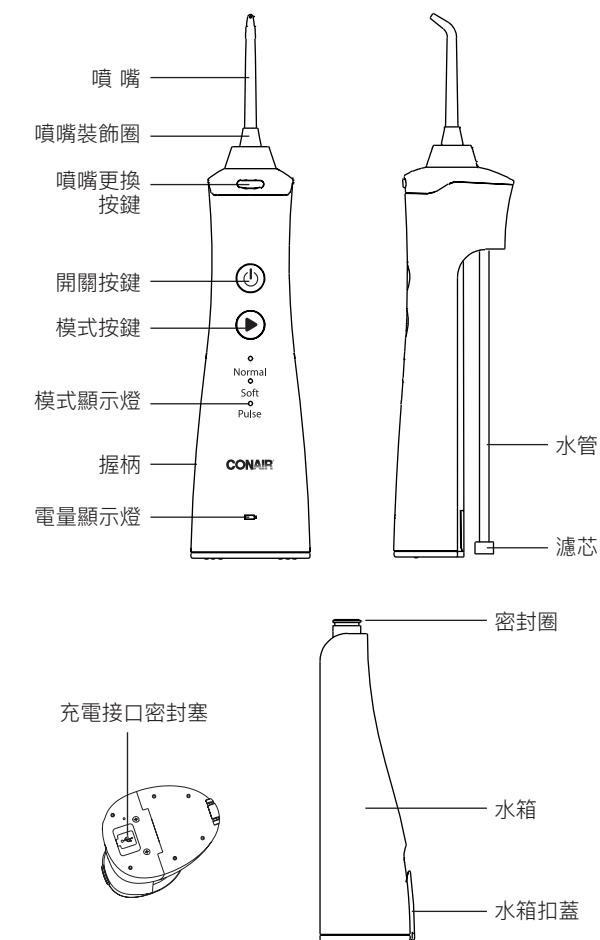
以上符號表示「適合用在浴缸或淋浴」

- 5歲以下兒童，不建議使用。
- 僅可使用本產品所提供的附件，不可使用其他附件。
- 僅可根據本說明書將本電器用於指定用途。
- 除非您的牙科專業人員另有規定，否則只能用溫水填充水箱。不要過滿。建議水溫不要超過40°C，以免燙傷。
- 不要將水引入舌頭，耳朵或其他微妙區域。該產品會可能產生壓力損壞敏感區域。
- 如果沒有噴嘴，請不要使用。
- 某些漱口液可能會腐蝕本產品，請不要把漱口液裝進本產品。
- 電池充滿電之後，務必拔下充電插頭，並蓋好充電接口密封塞。
- 本電器為個人保健用品，不適合商用或多名病患交互使用。
- 切勿將任何物體丟入或插入電器開口中。
- 在電器工作時，不可將其放在任何物品的表面。
- 在電器工作時，切勿將電器置之不理。
- 避免使充電線接觸灼熱表面。
- 切勿扭曲或拉扯充電線。
- 使用完畢後，不可將充電線纏繞到電器上，因為長期這樣做可能導致充電線損壞。在收納時將充電線鬆散地盤在電器一側即可。
- 如果電器損壞，請立即停止使用，聯繫您的供應商，向他們諮詢如何返修或換貨。
- 本電器充電電壓為5V DC，在給電器充電前請務必確保您所使用的充電器輸出電壓與電器上銘牌標示的電壓一致。
- 每次清潔前，請確保先拔去電器上的插頭，並確保蓋好充電接口密封塞。
- 本電器不適合身體、知覺或心智能力低下者或缺乏經驗和知識者(包括兒童)使用，除非他們是在安全負責人的監督和指導下使用本電器。
- 應當對兒童進行監督，確保他們不玩弄電器。
- 請勿使用洗碗機或微波爐清潔噴嘴、握柄、充電線。

醫療警告

- 若您裝有心律調節器或其他植入裝置，請勿使用本水牙線。
- 若您有醫療方面的顧慮，使用本產品之前請先諮詢您的醫師。
- 患有心臟病的人應在使用水牙線之前諮詢醫生。
- 牙周病患者或在過去12個月內接受過口腔、牙周手術或大規模的牙齒矯正，請在使用前與您的牙醫聯繫。
- 當您開始任何新的口腔衛生計劃時，您的牙齦最初可能會輕微出血。如果出現過多出血或使用兩周後出現輕微出血，請聯系您的牙醫。
- 請勿使用含有碘、漂白劑或茶樹油的漱口水或沖洗液。
- 戴口腔飾品時請勿使用。使用前取下。
- 如果舌頭或口腔有開放性傷口，請勿使用。
- 確保只有水射流尖端接觸牙齒，牙齦或舌頭。如果手柄的任何其他部分接觸它們，可能會對這些區域造成損壞，注意避免噴嘴擠壓牙齦，特別是牙科患者。
- 本產品僅用於口腔衛生清潔。不要用於任何其他目的。

介紹

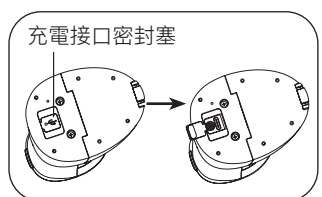


使用指南

充電

注意：本電器充電電壓為5V DC，在給電器充電前請務必確保您所使用的充電器輸出電壓與電器上銘牌標示的電壓一致 (5V DC)，超出此電壓會導致電器損壞。

- 如果使用時或使用後充電指示燈閃爍，表示電池電量不足，需要充電。
- 通過使用配送的USB充電線可直接連接到計算機上的USB端口或智能手機充電器進行充電 (充電電壓為5V DC)。
- 先將底蓋上的USB密封塞打開，如圖所示，再插入USB充電線進行充電。

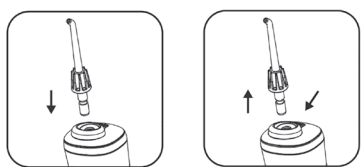


- 當電器開始充電時，手柄正面充電指示燈會閃爍。
- 充滿電後充電指示燈常亮。
- 水牙線完全充滿電需要8小時 (因環境不同可能會有差異)。

使用前準備

- 調整噴嘴，將噴嘴按到握柄上 (可聽到「啞啞」一聲) (見下圖)。如中途需更換噴嘴請先開機再輕按更換按鈕可輕鬆更換噴嘴。

溫馨提示：為獲得最佳效果，請每6個月更換一次噴嘴。如果噴嘴鬆動或不再「卡入」握柄，也要更換噴嘴。

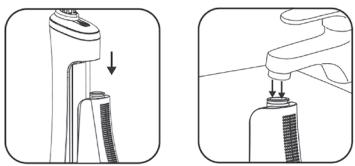


- 通過以下任何一種方法將水裝入水箱：

- 打開水箱蓋，水平握住水牙線，將水裝入水箱後蓋上水箱蓋。



- 取下水箱，豎直拿著水箱，將水裝入水箱，再將水箱從豎直方向裝入握柄上 (可聽到「啞啞」一聲)。

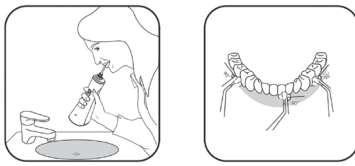


- 某些漱口液可能會腐蝕本產品，請不要把漱口液裝進本產品。
- 按電源按鈕打開產品，此時白色指示燈亮起。
- 通過按壓模式按鈕選擇需要的模式。

·有3種模式可供選擇，具體如下：  
·正常(Normal)：適用於牙齒的正常清潔。  
·輕柔(Soft)：適用於牙齒敏感，第一次使用水牙線或者需要比正常模式強度弱的用戶。  
脈衝(Pulse)：用於按摩牙齦，促進血液循環，強健牙齒。  
·可在打開水牙線前按壓模式鍵提前選擇所需要的模式。  
·本水牙線會自動記憶上次選擇的模式並為下次使用準備就緒。  
溫馨提示：為獲得舒適體驗，第一次使用者先用輕柔模式使用1星期，待適應後再使用正常模式。

使用本產品

- 確保水牙線已關閉，如已打開，請按開關鍵，以關閉水牙線。
- 按壓模式按鈕切換到您需要的模式。本水牙線會自動記憶上次選擇的模式，如您所需要的模式與上次使用的模式一樣，請不要進行此操作。
- 將水牙線豎直手持，噴嘴伸入口腔內，沖刷牙縫或牙齦。沖刷時，嘴巴微張，一方面防止水花外濺，另一方面水能順暢流出。

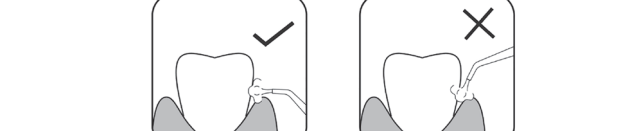


- 按住開關按鈕大約0.5秒以打開水牙線進行沖洗。

注意：

- 水流方向垂直於牙齒或牙齦。
- 沿著牙齒慢慢移動，按順序清潔牙齒。
- 噴嘴對齊牙齦線，並與牙齦垂直。
- 徹底清潔牙齒，牙托，牙冠和假牙。
- 不要直接對著牙周袋內噴水 (見下圖)。

- 要關閉水牙線，請按壓開關按鈕關機。



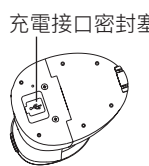
- 自動關機功能：  
本產品設有2分鐘定時功能，在使用過程中未對按鈕進行任何操作 將在2分鐘後自動關機，如果還需要繼續使用，請按動開關按鈕即可。

- 為了您的健康，請在每次使用後，按如下步驟操作：  
·打開水箱蓋，將水箱內的水倒出。  
·按動開關按鈕，水牙線將工作，並自動排乾電器內部的積水。  
·再次按動開關按鈕，水牙線關機。  
·關閉水箱蓋。  
·用乾淨的乾布擦乾水牙線。

日常清潔

注意：

·每次清潔前，請確保先拔去電器上的插頭，並確保蓋好握柄底部的充電接口密封塞。如未蓋好握柄底部充電接口密封塞可能會導致清洗後無法正常充電或工作。



- 請用清水或者中性洗滌清潔產品，不要用腐蝕性或者磨損性的洗滌劑，因為這些會損壞產品，不要用超過50°C的熱水清洗產品。
- 請勿使用洗碗機或微波爐清潔噴嘴、握柄、USB充電線。
- 如未妥善去除噴嘴或水箱的殘留物，可能會引發衛生問題。

本體的清潔：

- 請用乾布或濕布清潔本體。
- 不要將本體浸入水中清洗。

水箱的清潔：

- 可以用乾布或濕布擦乾淨，或者取下水沖洗，並自然晾乾。
- 如果打算長時間不用，請將裏面的水清除乾淨，並自然晾乾。

噴嘴的清潔：

- 可以用乾布或濕布擦乾淨，或者取下水沖洗，然後晾乾。
- 不要折彎，拉扯和扭曲噴嘴水管。
- 為獲得最佳效果，請每6個月更換一次噴嘴。如果噴嘴鬆動或不再「卡入」握柄，也要更換噴嘴。

收納

- 如果您打算長時間不使用本電器，為避免細菌滋生，請按照下列步驟操作。  
·打開水箱蓋，將水箱內的水倒出。  
·按動開關按鈕，水牙線將工作，並自動排乾電器內部的積水。  
·再次按動開關按鈕，水牙線關機。  
·向下拔出水箱。

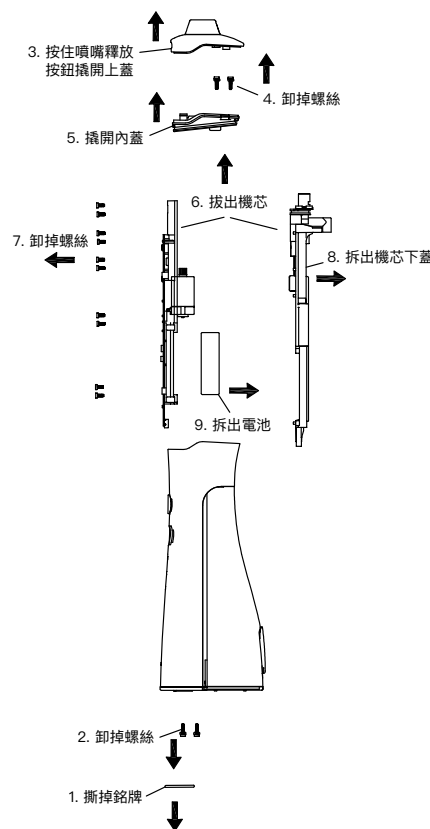
- 用乾淨的乾布或濕布清潔握柄，水箱，噴嘴。
- 將握柄，水箱，噴嘴以及充電座放置於遠離陽光直射的地方晾乾。
- 關閉水箱蓋，並將水箱推回握柄。
- 將握柄，噴嘴和USB充電線存放在涼爽乾燥處。

廢棄處理

本產品使用的是可再循環的充電電池，產品壽命終結，丟棄產品前一定要將電池取出，並按當地的廢棄物管理條例進行回收或處置，若有疑問請諮詢當地廢棄物管理部門。

- 注意：除非要將產品廢棄，切勿自行拆卸本產品，過早拆卸將損壞產品。
- 拆卸電池前，確保電池電量已耗盡，如需要耗盡電量，可以按開關按鈕大約0.5秒開機，讓水牙線工作至自動停止，多幾次直至無電。
- 分解器具，取出電池前，一定要斷開電源。
- 電池必須被安全地處理。
- 不要使用其他電池來替換本機內的電池，特別是不可充電電池，這可能引發火災或電擊等危險。
- 不要將廢電池與一般家庭垃圾一起丟棄，確保電池廢棄於官方的回收處理中心或收集點。

按以下順序拆開本體卸下電池：



故障排除指南

問題	可能的原因	解決方法
不能工作	新購買或三個月以上沒有使用	請充電8小時以上
工作時水壓很低	噴嘴裏面有東西堵住	更換噴嘴
	過濾網被堵住	清潔過濾網
充滿電後只能使用很短時間	電池到了使用壽命的末期	請聯系服務熱線
	充電時間不足	請充電8小時以上
充電時充電指示燈不亮	USB充電線插頭沒有接好	請正確接好電源
	產品充電電路有故障	請聯系服務熱線

一年保養限期

在您購買日期起一年內，在正常使用的情况下，如產品的品質或零件有任何問題，美康雅顧客服務中心將會為您免費提供維修或換貨服務。

注意：此項保修不包括一切因錯誤使用、不依指示處理產品及意外損毀、遺失零件及經自行改造的產品，美康雅公司有權在不預先通知的情況下更改條款和說明書。如需獲得此保修服務，請保留正本收據，倘若產品於保養期內有任何問題，可蒞臨您所在地區的美康雅顧客服務中心處理。

保修期之後

請致電使用說明書中所列出您所在地區的美康雅顧客服務中心，詢問維修服務詳情，或是電郵至email\_asia@conair.com，附上您的名字，電話號碼和電郵地址，及說明產品問題的詳細情況。

美康雅顧客服務中心

香港九龍觀塘觀塘道388號創紀之城渣打中心35樓  
顧客服務熱線：(852) 2751 4604  
電郵：email\_asia@conair.com  
網址：www.hkconair.com

CONTINENTAL CONAIR LIMITED  
CHINA CREATIVE DEPARTMENT

Date	12/31/2021
Customer	VS-HK
Model No.	CWJ182H
Description	IB
Job No.	
Reference No.	IB-21/363
Revision No.	0
Color	1C+1C(Black)
Open Size	736mm(W) X 214mm(H)
Folded Size	92mm(W) X 214mm(H)
Material	80gsm Art/paper
Prepared by	Betty Bai
Approved by	Phoebe Laung/Andy Huang
Designer	
Design Job No.	
Vendor	JBY

折疊方法  
Folding method:  
16 pages (8 x 2)



CWJ182H

IB-21/363



## CONAIR PORTABLE USB RECHARGEABLE WATER JET

### INTRODUCTION

This portable water jet can improve your oral hygiene. It will effectively flush out the debris, reduce plaque between teeth, strengthen the gum and prevent tartar build-up.

### READ ALL INSTRUCTIONS BEFORE USING KEEP AWAY FROM WATER

### SAFETY INSTRUCTION: IMPORTANT SAFEGUARDS

When using an electrical appliance, especially when children are present, the following safety precautions should always be taken: Polythene bags over product or package may be dangerous. To avoid danger of suffocation, keep the wrapper away from babies and children. The bag is not a toy.



### SAFETY PRECAUTIONS

**WARNING:** Do not use or leave the power adaptor in a position where it can become wet or there is a danger of it falling into a basin or other vessels containing water. Keep the appliance dry, unless it otherwise specified.

This product is washable under water tap (sealing charging socket before cleaning).



The above mark indicates that this product is suitable for use in a bath or shower.

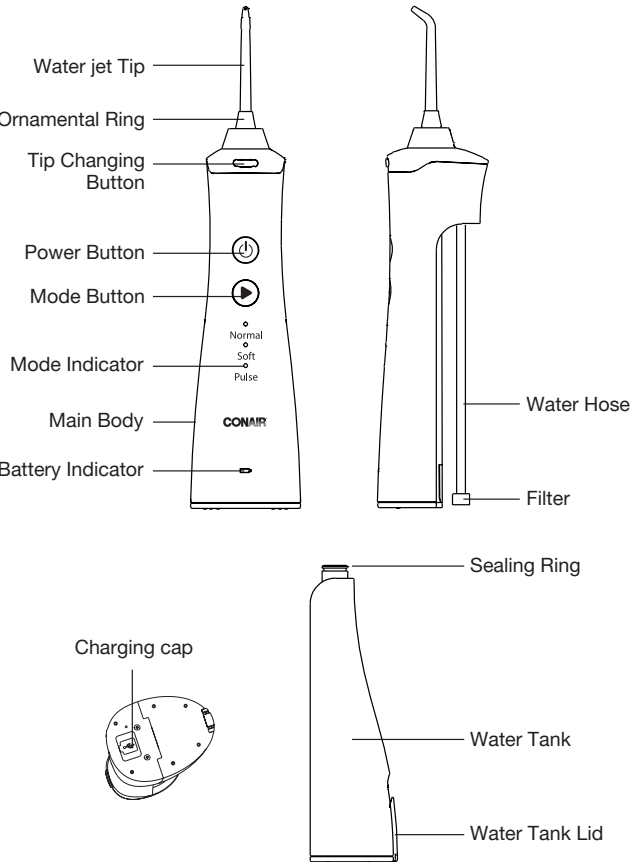
- This appliance is not intended for use by children under 5.
- Do not use any attachments other than those provided with this product.
- Use this appliance only for its intended use as described within this instruction booklet.
- Unless otherwise specified by a dental professional, fill the water tank with lukewarm water only. Do not overfill the water tank. It is recommended for the temperature of the water not to exceed 40°C to avoid scalding.
- Do not direct the water jet under the tongue, into the ear, or other delicate areas. The product can produce pressures that may cause damage in these delicate areas.
- Do not use the appliance without a water jet tip.
- Some mouthwashes may corrupt this product. Please do not add mouthwash to this product.
- Always unplug the appliance and seal charging socket when fully charged.
- This appliance is a personal care product. It is not suitable for commercial use or shared use by multiple patients.
- Do not drop or insert any object into an opening.
- Do not place on any surface while it is operating.
- Do not leave unattended while it is operating.
- Keep the cord away from heated surfaces.

- Never twist or pull on the power cord.
- After use, do not wrap the cord around the appliance as in time this may cause the cord to fracture. Coil cord loosely by the side of the appliance in storage.
- In the event of damage, discontinue use immediately and contact your dealer for instructions on returning it for examination or exchange.
- The charging voltage of this appliance is 5V DC. Before charging the appliance, make sure the output voltage of the charger corresponds to the voltage marked on the rating plate of the appliance.
- This appliance must be powered by safety extra-low voltage.
- Before cleaning, always unplug the appliance and secure the charging receptacle lid firmly.
- This appliance is not intended for use by persons (including children) with reduced physical, sensory or mental capabilities, or lack of experience and knowledge, unless they have been given supervision or instruction concerning use of the appliance by a person responsible for their safety.
- Children should be supervised to ensure they do not play with the appliance.
- Do not use dishwasher or microwave oven to clean the jet tips, handle and USB cord.

### MEDICAL WARNING

- Do not use this water jet if you are fitted with a pacemaker or other implantable devices.
- If you have any medical concerns, consult your doctor before using this product.
- Patients with cardiac disease should consult their doctor before using this water jet.
- Contact your dentist prior to use if you have periodontal disease or have had oral or periodontal surgery or major orthodontic treatment in the previous 12 months.
- When you start any new oral hygiene program, your gums may initially bleed slightly. Contact your dentist if excessive bleeding occurs or if bleeding continues after two weeks of use.
- Do not use mouthwashes or oral rinses that contains iodine, decolorizer or tea tree oil.
- Remove any oral jewelry prior to use of this product.
- Do not use if you have an open wound on your tongue or in your mouth.
- Make sure only the tip of the water jet comes contact to the teeth, gum or tongue. If any other part of the handle contacts them, it may cause damage to these areas. Be careful not to press the tip against the gum, especially dental patients.
- This product is designed for oral cleaning only. Do not use the unit for any other purpose.

### PRODUCT DESCRIPTION

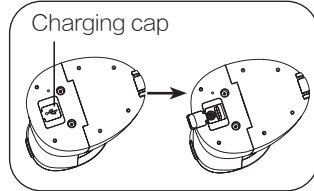


Application Scenarios of Water jet Tips		
Classic tip	Pressure water cleans food debris effectively	
Pik Pocket Tip	Ideal for removing debris in tooth pocket and prevent calculus	
Plaque Seeker	Ideal for retainer/implants/crowns/bridges cleaning	

### OPERATING INSTRUCTIONS CHARGING

**Note: The charging voltage of this appliance is 5V DC. Before charging the appliance, make sure the output voltage of the charger corresponds to the voltage marked on the rating plate (5V DC). A higher voltage will cause damage to the appliance.**

- If the charging indicator starts to flash when using or after use, the battery is low and needs recharging.
- Use the provided USB charging cable to connect the appliance to a computer USB port or a smart phone charger to charge the appliance (the charging voltage is 5V DC).
- Open the USB sealing plug on the bottom cover as indicated by the figure below, then insert the USB cable to charge.

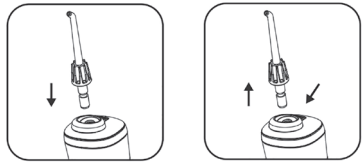


- Once charging is started, the charging indicator on the front side of the handle will flash.
- The charging indicator will stay on when the appliance is fully charged.
- It takes 8 hours for the flusher to be fully charged (may vary depending on the environment).

### BEFORE USE

- Adjust the tip, then push the tip downwards until it is firmly attached to the handle (you will hear a click) (see the figure below). If you need to change the tip in the course of using, you should turn it off first. Simply press the changing button to change the tip.

**TIPS:** For best results, please replace the tip every 6 months. If the tip becomes loose or not "snapping into" the handle, you also need to replace the tip.

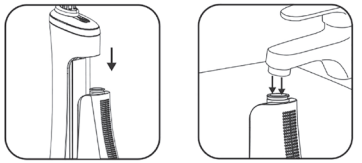


- Fill the water tank by either of the following methods:

-- Open the water tank lid, hold the water jet horizontally and fill with water. Replace the lid.



-- Remove the water tank, hold the water tank vertically and fill with water. Then replace the water tank from the vertical direction onto the main body (you will hear a click).



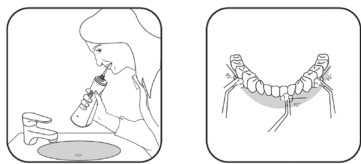
**NOTE:** Some mouthwashes may corrupt this product. Do not add mouthwash to this product.

- Press the power button to turn the appliance on. The LED indicator will light on.
  - Press the mode button to choose your desired mode.
    - There are 3 modes to choose from:
- Normal: suitable for normal cleaning of teeth.  
Soft: Suitable for users with sensitive teeth. Progressive power allows your gum to adapt to the pressure of the waterflow gradually, providing gentle cleaning without stimulation.  
Pulse: suitable for massaging the gum. This function can improve blood circulation and strengthen the teeth.
- Choose your desired mode by pressing the mode button before turning the power on.
  - This water jet can automatically memorize the previous mode selected by the user and prepare for the next use.

**TIPS:** In order to get a comfortable experience, when using the product for the first time, it is recommended to use soft mode for one week and change to normal mode until you get adapted to this product.

### USING THE PRODUCT

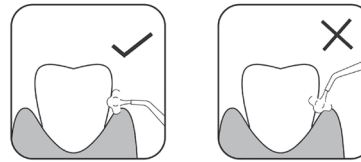
- Ensure the water jet is in off position. If it is operating, press the power button to turn it off.
- Press the mode button to select your desired mode. This water jet will automatically memorize the previous mode selected by the user. If your desired mode is consistent with the previous one, skip this step.
- Hold the water jet vertically, place the tip into your mouth with the tip directing at spaces between your teeth or the gum. Keep your mouth slightly close to avoid water spraying outside and water easy running out of mouth.



- Press the power button and hold for about 0.5 second to turn on the water jet to flush.

### NOTE:

- Direct the water jet at a right angle to the teeth or gum.
- Move along the teeth, clean the teeth in sequence.
- Direct the tip to the gumline at a right angle to the gum.
- Clean the teeth, braces, crowns and dentures thoroughly.
- Do not direct the water jet into tooth pocket.



- To turn the water jet off, simply press the power button.
- Automatic Power Off: This product is equipped with a 2-minute timer. When the appliance has not been operated for 2 minutes, it will automatically power off. To continue to

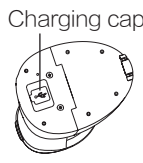
use, simply press the power button.

- For the sake of your health, please follow the following steps after each use:
  - Open the water tank lid and pour out the water from water tank.
  - Press the power button. The water jet will start to work and drain out the water in the appliance.
  - Press the power button again. The flusher will shut off.
  - Replace the water tank lid.
  - Wipe off any water on the flusher with a clean and dry cloth.

### DAILY CLEANING

#### NOTE:

- Before cleaning, always unplug the appliance and sealing charging socket with charging cap on the bottom of the main body. If charging cap is not covered properly, the appliance may be unable to charge or work after cleaning.**



- Use clean water or neutral detergent to clean this product. Do not use corrosive or abrasive cleansers because they would cause damage to the product. Do not clean this product with hot water over 50°C.
- Do not use dishwasher or microwave oven to clean the tips, handle and USB cable.
- If the residues in the tip or water tank are not removed properly, there may be a hygiene problem.

### CLEANING MAIN BODY:

- Clean the main body with a dry or damp cloth.
- Never immerse the main body into water.

### CLEANING WATER TANK:

- Wipe the water tank with a dry or damp cloth, or remove it to rinse under running water.
- If you are not going to use it for an extended period, please pour out the water and let it dry naturally.

### CLEANING WATER JET TIPS:

- Wipe with a dry or damp cloth, or remove it to rinse under running water. Then let it dry naturally.
- Do not bend, pull or twist the water hose.
- For best results, please replace the tip every 6 months. If the tip becomes loose or not "snapping into" the handle, you also need to replace the tip.

### STORAGE

If you are not going to use the appliance for an extended period, in order to avoid bacteria breeding, please follow the following steps:

- Open the water tank lid, pour out the water.
- Press the power button, the water jet will start to work and drain out the water in the appliance.
- Press the power button again to turn off the flusher.
- Remove the water tank by sliding it down.

- Clean the handle, water tank, tips with a clean dry or damp cloth.
- Leave the handle, water tank, tips and charging base dry out of direct sunlight.
- Close the water tank lid and slide the water tank back to handle.
- Store the handle, tips and USB charging cable in a cool dry place.

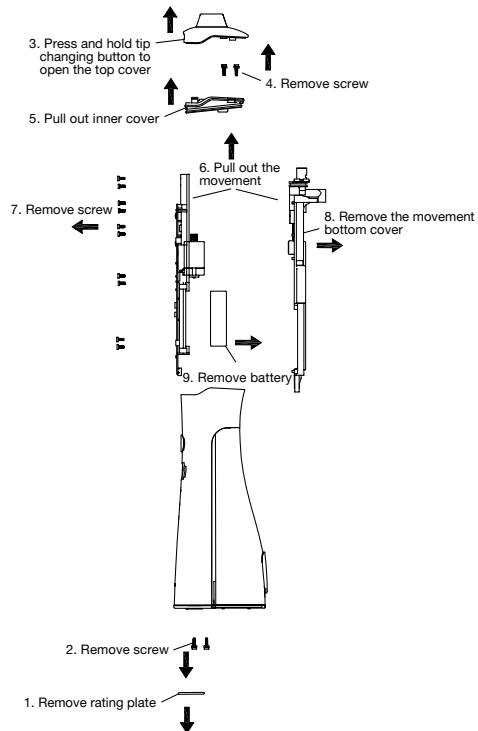
### DISPOSAL

This product is driven by rechargeable battery. Please remove the battery before discarding your product at the end of its life; and recycle or dispose the battery according to your local waste regulations. If you have any questions, please consult your local waste disposal office.

Note: Unless you are discarding this product, please do not attempt to disassemble it. This will cause damage to the product.

- Before removing the battery, ensure the battery has run out. If you need to run the battery out, press the power button and hold for 0.5 second to turn on. Run the flusher until the it stops operating. Repeat several times until the battery runs out completely.
- Before disassembling the unit and removing the battery, make sure the power is disconnected.
- The batteries must be disposed safely.
- Never replace the battery with other types of battery, especial non-rechargeable batteries. This could cause fire or an electric shock.
- Never throw batteries away with the normal household waste, make sure batteries to be disposed at an official recycling center or collection point.

### REMOVE THE BATTERY ACCORDING TO THE FOLLOWING STEPS:



### TROUBLESHOOTING

Fault Diagnosis		
Problems	Possible Reasons	Solutions
The appliance does not work.	The water jet has not been used since purchase or for more than 3 months.	Charge for at least 8 hours.
The water pressure is too low.	The tip is clogged.	Replace the tip.
	The filter is blocked.	Clean the filter.
The appliance can only operate for a short time after fully charged.	The battery has reached the end of its life.	Contact Service Hotline.
	Insufficient charging time.	Charge for at least 8 hours.
The charging indicator does not light on when charging.	The USB cable is not connected correctly.	Connect the power supply correctly.
	The charging circuit has a fault.	Contact Service Hotline.

### ONE YEAR LIMITED WARRANTY

This Conair Appliance is guaranteed for consumer use for one year. To obtain this warranty service, please keep the original purchase receipt. This guarantee is no longer valid in case of alteration or repair by any unauthorized persons and only covers defects under normal use from the date of purchase. If your product does not perform satisfactorily because of defects in materials or manufacture, it will be repaired or replaced under guarantee through the Conair Service Centre. Conair reserves the right to amend terms and specifications without prior notice.

### OUT OF GUARANTEE

Call Conair Service Centre in your region as listed in this Instruction Booklet for details of repair service. Or email to us at email\_asia@conair.com with your name, contact telephone number and email address and details of the fault.

### CONAIR CUSTOMER SERVICE:

35/F., Standard Chartered Tower, Millennium City,  
388 Kwun Tong Road, Kwun Tong, Kowloon, Hong Kong  
Conair Customer Hotline: (852) 2751 4604  
E-mail: email\_asia@conair.com  
Website: www.hkconair.com