

Conair Portable Battery Driven Water Jet

美康雅便攜電池款 水牙線



INSTRUCTION
BOOKLET
使用說明

CONAIR®

CWJ201H

便攜電池款 水牙線

產品描述：

便攜式水牙線系統可增強口腔衛生，清潔齒間殘渣，有效減少齒縫間的牙菌斑，強化牙齦健康，預防牙結石的產生。

安全說明：

重要安全指示

當使用電器時，尤其有兒童在場，應小心及遵守以下安全指示：產品外的聚乙烯袋或包裝袋可能有危險。為避免發生窒息風險，應當將包裝袋放到嬰兒和兒童接觸不到的地方。包裝袋不是玩具。



使用前請細閱使用說明

電器應遠離水源

安全預防措施

本機可在打開的水龍頭下進行清洗(清洗前請確保關好電池蓋)



以上符號表示「適合用在浴缸或淋浴」

- 5歲以下兒童，不建議使用。
- 僅可使用本產品所提供的附件，不可使用其他附件。
- 僅可根據本說明書將本電器用於指定用途。
- 除非您的牙科專業人員另有規定，否則只能用溫水填充水箱。不要過滿。建議水溫不要超過40°C，以免燙傷。
- 不要將水引入舌頭，耳朵或其他微妙區域。該產品會可能產生壓力損壞敏感區域。
- 如果沒有噴嘴，請不要使用。
- 某些漱口液可能會腐蝕本產品，請不要把漱口液裝進本產品。
- 本電器為個人保健用品，不適合商用或多名病患交互使用。
- 切勿將任何物體丟入或插入電器開口中。
- 在電器工作時，不可將其放在任何物品的表面。
- 在電器工作時，切勿將電器置之不理。
- 如果電器損壞，請立即停止使用，聯繫您的供應商，向他們諮詢如何返修或換貨。
- 電器必須由安全特低電壓供電。
- 每次清潔前，請確保關好電池蓋。
- 本電器不適合身體、知覺或心智能力低下者或缺乏經驗和知識者（包括兒童）使用，除非他們是在安全負責人的監督和指導下使用本電器。
- 應當對兒童進行監督，確保他們不玩弄電器。
- 請勿使用洗碗機或微波爐清潔噴嘴。

醫療警告

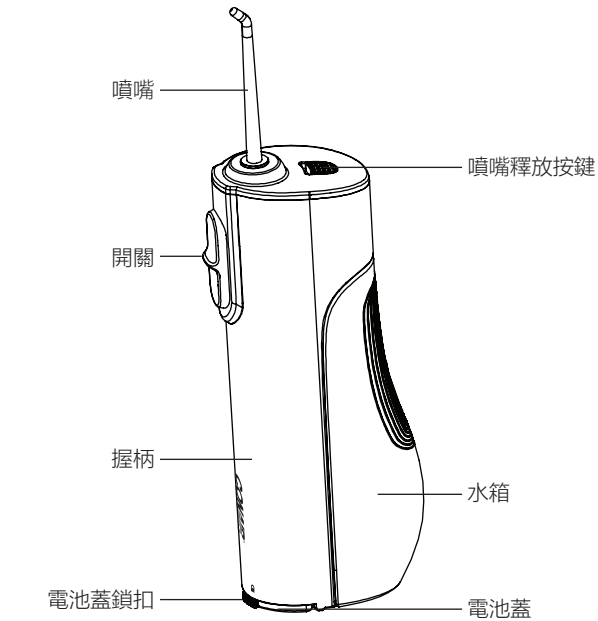
- 若您有醫療方面的顧慮，使用本產品之前請先諮詢您的醫師。
- 患有心臟病的人應在使用水牙線之前諮詢醫生
- 牙周病患者或在過去12個月內接受過口腔、牙周手術或大規模的牙齒矯正，請在使用前與您的牙醫聯繫。
- 當您開始任何新的口腔衛生計劃時，您的牙齦最初可能會輕微出血。如果出現過多出血或使用兩周後出現輕微出血，請聯繫您的牙醫。
- 請勿使用含有碘、漂白劑或茶樹油的漱口水或沖洗液。
- 戴口腔飾品時請勿使用。使用前取下。
- 如果舌頭或口腔有開放性傷口，請勿使用。

- 確保只有水射流尖端接觸牙齒，牙齦或舌頭。如果手柄的任何其他部分接觸它們，可能會對這些區域造成損壞，註意避免噴嘴擠壓牙齦，特別是牙科患者。
- 本產品僅用於口腔衛生清潔。不要用於任何其他目的。

重要須知

- 建議使用比較耐用的鹼性電池。
- 如果電池電量用盡或長期不使用水牙線，應當將電池取出。
- 在安裝電池前，應當將電池接觸點和設備上的接觸片擦乾淨。
- 應當儘快取出用盡的電池。
- 務必購買最適合本機用途的正確大小和等級的電池。
- 必須同時更換所有電池。
- 不可將新舊電池混用。不可將堿性電池、標準（碳鋅）電池和可充電（鎳鎘或鎳氫）電池混用。

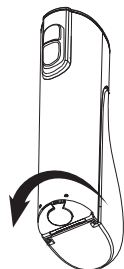
介紹



使用指南

安裝電池

- 檢查並確保產品和手是乾的，按下圖方向旋轉電池蓋鎖扣打開電池蓋。



- 按下圖向下翻轉電池蓋，根據電池蓋上標示的正負極位置，裝入2節AA（5號）電池，蓋上電池蓋，旋轉電池蓋鎖扣並檢查

是否已牢固的鎖緊。

注意：

每次使用前，請確保電池蓋已被牢固鎖緊，如未鎖緊電池蓋可能會使液體進入水牙線內部導致水牙線無法正常工作。



使用前準備

- 調整噴嘴，將噴嘴按到握柄上（可聽到「啞啞」一聲），（見下圖）。如中途需更換噴嘴請先關機再輕按更換按鈕可輕鬆更換噴嘴。

溫馨提示：為獲得最佳效果，請每 6 個月更換一次噴嘴。如果噴嘴 鬆動或不再「卡入」手柄，也要更換噴嘴。

- 向下取下水箱，豎直拿著水箱，將水裝入水箱，再將水箱從豎直方向裝在握柄上（可聽到「嗶」一聲）。

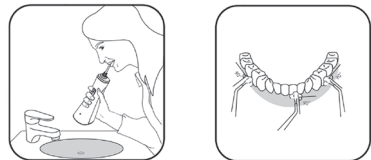
注意：某些漱口液可能會腐蝕本產品，請不要把漱口液裝進本產品。

- 向上推動開關可獲得不同的工作模式：
正常(Normal)：適用於牙齒的正常清潔。
輕柔(Soft)：適用於牙齒敏感度正常的用戶。

溫馨提示：為獲得舒適體驗，第一次使用者先用輕柔模式使用1星期，待適應後再使用正常模式。

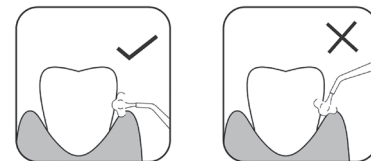
使用本產品

- 確保水牙線處於關閉狀態。
- 將水牙線豎直手持，噴嘴伸入口腔內，沖刷牙縫或牙齦。沖刷時，嘴巴微抿，一方面防止水花外濺，另一方面水能順暢流出。



- 向上推動開關以打開水牙線。
注意：
 - 水流方向垂直於牙齒或牙齦。
 - 沿著牙齒慢慢移動，按順序清潔牙齒。
 - 噴嘴對齊牙齦線，並與牙齦垂直。
 - 徹底清潔牙齒，牙托，牙冠和假牙。

- 不要直接順著牙周袋內噴水（見下圖）。



- 要關閉水牙線，請向下推動開關開機。
- 為了您的健康，請在每次使用後，按如下步驟操作：
 - 向下拔出水箱蓋，將水箱內的水倒出。
 - 向上裝入水箱。
 - 向上推動開關，水牙線將工作，並自動排乾電器內部的積水。
 - 向下推動開關，水牙線關機。
 - 用乾淨的乾布擦乾水牙線。



日常清潔

注意：

- 每次清潔前，請確保電池蓋已被牢固鎖緊，如未鎖緊電池蓋可能會使液體進入水牙線內部導致水牙線無法正常工作。
- 請用清水或者中性洗滌清潔產品，不要用腐蝕性或者磨損性的洗滌劑，因為這些會損壞產品，不要用超過50°C的熱水清洗產品。
- 請勿使用洗碗機或微波爐清潔噴嘴、握柄。
- 如未妥善去除噴嘴或水箱的殘留物，可能會引發衛生問題。

握柄的清潔：

- 請用乾布或濕布清潔握柄。
- 不要將握柄浸入水中清洗。

水箱的清潔：

- 可以用乾布或濕布擦乾淨，或者取下用水沖洗。
- 如果打算長時間不用，請將裏面的水清除乾淨，並自然晾乾。

噴嘴的清潔：

- 可以用乾布或濕布擦乾淨，或者取下水沖洗，然後晾乾。
- 不要折彎，拉扯和扭曲噴嘴水管。
- 為獲得最佳效果，請每6個月更換一次噴嘴。如果噴嘴鬆動或不再「卡入」握柄，也要更換噴嘴。

收納

如果您打算長時間不使用本電器，為避免細菌滋生，請將按照下列步驟操作。

- 向下拔出水箱蓋，將水箱內的水倒出。
- 向上裝入水箱。
- 向上推動開關，水牙線將工作，並自動排乾電器內部的積水。
- 向下推動開關，水牙線關機。
- 向下拔出水箱蓋，用乾淨的乾布擦乾握柄，水箱和噴嘴。
- 將握柄，水箱，噴嘴放置於遠離陽光直射的地方晾乾。
- 將水箱退回握柄。

- 將握柄，噴嘴存放在涼爽乾燥處。

故障排除指南

問題	可能的原因	解決方法
不能工作	新購買或三個月以上沒有使用	檢查是否放入電池
工作時水壓很低	噴嘴裏面有東西堵住	更換噴嘴
	過濾網被堵住	清潔過濾網

廢棄處理

本產品使用的是乾電池，電池電量耗盡或產品壽命終結，請將電池按當地的廢棄物管理條例進行回收或處置，若有疑問請諮詢當地廢棄物管理部門。

- 為保護環境，當電池電量耗盡時，應當將電池棄置於回收箱。如果電池洩漏，註意避免皮膚接觸，並將其棄置於回收箱。
- 在丟棄產品前，請一定要將電池取出，並按當地的廢棄物管理條例進行回收或處置。
- 禁止將電池丟入火中，除非是在受到控制的情況下進行焚燒。如果不遵守這一註意事項，可能導致爆炸。切勿嘗試對一次性電池充電，因為這可能導致洩漏、火災或爆炸。

一年保養限期

在您購買日期起一年內，在正常使用的情况下，如產品的品質或零件有任何問題，美康雅顧客服務中心將會為您免費提供維修或換貨服務。

注意：此項保修不包括一切因錯誤使用、不依指示處理產品及意外損毀、遺失零件及經自行改造的產品，美康雅公司有權在不預先通知的情況下更改條款和說明書。如需獲得此保修服務，請保留正本收據，倘若產品於保養期內有任何問題，可蒞臨您所在地區的美康雅顧客服務中心處理。

保修期之後

請致電使用說明書中所列出您所在地區的美康雅顧客服務中心，詢問維修服務詳情，或是電郵至email_asia@conair.com，附上您的名字，電話號碼和電郵地址，及說明產品問題的詳細情況。

美康雅顧客服務中心

香港九龍觀塘觀塘道388號創紀之城渣打中心35樓
顧客服務熱線：(852) 2751 4604
電郵：email_asia@conair.com
網址：www.hkconair.com

CWJ201H

IB-21/360

CONTINENTAL CONAIR LIMITED CHINA CREATIVE DEPARTMENT

Date	1/20/2022
Customer	VS-HK
Model No.	CWJ201H
Description	IB
Job No.	
Reference No.	IB-21/360
Revision No.	0
Color	1C+1C(Black)
Open Size	552mm(W) X 214mm(H)
Folded Size	92mm(W) X 214mm(H)
Material	80gsm Artpaper
Prepared by	Betty Bai
Approved by	Phoebe Laung/ Andy Huang
Designer	
Vendor	

折疊方法
Folding method:
12 pages (6 x 2)



CONAIR PORTABLE BATTERY DRIVEN WATER JET

INTRODUCTION

This portable water jet can improve your oral hygiene. It will effectively flush out the debris, reduce plaque between teeth, strengthen the gum and prevent tartar build-up.

SAFETY INSTRUCTION: IMPORTANT SAFEGUARDS

When using an electrical appliance, especially when children are present, the following safety precautions should always be taken: Polythene bags over product or package may be dangerous. To avoid danger of suffocation, keep the wrapper away from babies and children. The bag is not a toy.



READ ALL INSTRUCTIONS BEFORE USING KEEP AWAY FROM WATER

SAFETY PRECAUTIONS

This product is washable under water tap (secure battery cover before cleaning).



The above mark indicates that this product is suitable for use in a bath or shower.

- This appliance is not intended for use by children under 5.
- Do not use any attachments other than those provided with this product.
- Use this appliance only for its intended use as described within this instruction booklet.
- Unless otherwise specified by a dental professional, fill the water tank with lukewarm water only. Do not overfill the water tank. It is recommended for the temperature of the water not to exceed 40°C to avoid scalding.
- Do not direct the water jet under the tongue, into the ear, or other delicate areas. The product can produce pressures that may cause damage in these delicate areas.
- Do not use the appliance without a water jet tip.
- Some mouthwashes may corrupt this product. Please do not add mouthwash to this product.
- This appliance is a personal care product. It is not suitable for commercial use or shared use by multiple patients.
- Do not drop or insert any object into an opening.
- Do not place on any surface while it is operating.
- Do not leave unattended while it is operating.
- In the event of damage, discontinue use immediately and contact your dealer for instructions on returning it for examination or exchange.
- This appliance must be powered by safety extra-low voltage.
- Before cleaning, always unplug the appliance and secure the charging receptacle lid firmly.
- This appliance is not intended for use by persons (including children) with reduced physical, sensory or mental capabilities, or lack of experience and knowledge, unless they have been given supervision or instruction concerning use of the appliance by a person responsible for their safety.
- Children should be supervised to ensure they do not play with the appliance.
- Do not use dishwasher or microwave oven to clean the jet tips and handle.

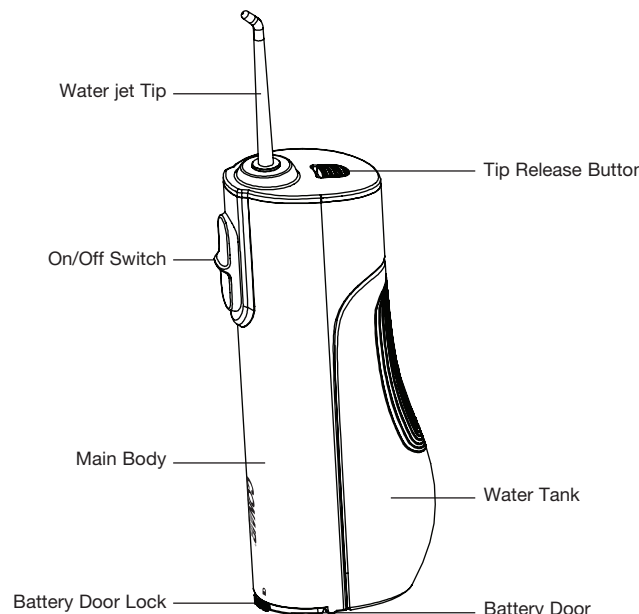
MEDICAL WARNING

- If you have any medical concerns, consult your doctor before using this product.
- Patients with cardiac disease should consult their doctor before using this water jet.
- Contact your dentist prior to use if you have periodontal disease or have had oral or periodontal surgery or major orthodontic treatment in the previous 12 months.
- When you start any new oral hygiene program, your gums may initially bleed slightly. Contact your dentist if excessive bleeding occurs or if bleeding continues after two weeks of use.
- Do not use mouthwashes or oral rinses that contains iodine, decolorizer or tea tree oil.
- Remove any oral jewelry prior to use of this product.
- Do not use if you have an open wound on your tongue or in your mouth.
- Make sure only the tip of the water jet comes contact to the teeth, gum or tongue. If any other part of the handle contacts them, it may cause damage to these areas. Be careful not to press the tip against the gum, especially dental patients.
- This product is designed for oral cleaning only. Do not use the unit for any other purpose.

IMPORTANT

- We recommend using longer-lasting alkaline batteries.
- If you are not going to use your water jet for a long time or if the batteries are dead, remove the batteries from the unit.
- Clean the battery contacts and those of the device prior to battery installation.
- Remove used batteries promptly.
- Always purchase the correct size and grade of battery most suitable for the intended use.
- Replace all batteries of a set at the same time.
- Do not mix old and new batteries. Do not mix alkaline, standard (carbon-zinc), or rechargeable (nickel cadmium or nickel metal hydride) batteries.

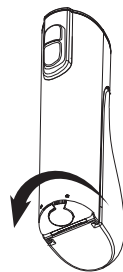
PRODUCT DESCRIPTION



OPERATING INSTRUCTIONS

BATTERY IN STALLMENT

- Check and ensure both the product and your hands are dry. Turn battery door lock as indicated in the figure below to open the battery door.



- Flip the battery door down as indicated in the figure below. Align the two AA batteries with the positive and negative positions indicated inside the battery door. Turn the battery door to close it and check whether it is firmly locked in place.

NOTE: Before each use, make sure the battery door is firmly closed and securely locked. If it is not securely locked, water may get into the product, which will cause the water jet to fail to work properly.



BEFORE USE

- Adjust the tip, then push the tip downwards until it is firmly attached to the handle (you will hear a click) (see the figure below). If you need to change the tip in the course of using, you should turn it off first. Simply press the changing button to change the tip.

TIPS: For best results, please replace the tip every 6 months. If the tip becomes loose or not "snapping into" the handle, you also need to replace the tip.

- Remove the water tank by sliding it down, hold the water tank vertically and fill with water. Then replace the water tank from the vertical direction onto the main body (you will hear a click).

NOTE: Some mouthwashes may corrupt this product, please do not add mouthwash to this product.

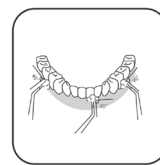
- Slide the switch up to choose mode:
Normal: suitable for normal cleaning of teeth.
Soft: suitable for users with sensitive teeth.

TIPS: In order to get a comfortable experience, when using the product for the first time, it is recommended to use soft mode for one week and change to normal mode until you get

adapted to this product.

USING THE PRODUCT

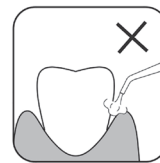
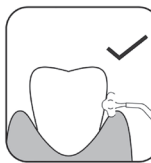
- Ensure the water jet is in off position.
- Hold the water jet vertically, place the tip into your mouth with the tip directing at spaces between your teeth or the gum. Keep your mouth slightly close to avoid water spraying outside and water easy running out of mouth.



- Slide the ON/OFF switch up to turn the water jet on.

NOTE:

- Direct the water jet at a right angle to the teeth or gum.
- Move along the teeth, clean the teeth in sequence.
- Direct the tip to the gumline at a right angle to the gum.
- Clean the teeth, braces, crowns and dentures thoroughly.
- Do not direct the water jet into tooth pocket.



- To turn the water jet off, simply slide the ON/OFF switch down.
- For the sake of your health, please follow the following steps after each use:
 - Open the water tank lid and pour out the water from water tank.
 - Press the power button. The water jet will start to work and drain out the water in the appliance.
 - Press the power button again. The flusher will shut off.
 - Replace the water tank lid.
 - Wipe off any water on the flusher with a clean and dry cloth.



DAILY CLEANING

NOTE:

- Before cleaning, please make sure that the battery cover is securely locked. If the battery cover is not locked firmly, the liquid may enter the water jet, and the water jet may be unable to charge or work after cleaning.
- Use clean water or neutral detergent to clean this product. Do not use corrosive or abrasive cleansers because they would cause damage to the product. Do not clean this product with hot water over 50°C.
- Do not use dishwasher or microwave oven to clean the tips, handle and USB cable.

- If the residues in the tip or water tank are not removed properly, there may be a hygiene problem.

CLEANING MAIN BODY:

- Clean the main body with a dry or damp cloth.
- Never immerse the main body into water.

CLEANING WATER TANK:

- Wipe the water tank with a dry or damp cloth, or remove it to rinse under running water.
- If you are not going to use it for an extended period, please pour out the water and let it dry naturally.

CLEANING WATER JET TIPS:

- Wipe with a dry or damp cloth, or remove it to rinse under running water. Then let it dry naturally.
- Do not bend, pull or twist the water hose.
- For best results, please replace the tip every 6 months. If the tip becomes loose or not "snapping into" the handle, you also need to replace the tip.

STORAGE

If you are not going to use the appliance for an extended period, in order to avoid bacteria breeding, please follow the following steps:

- Open the water tank lid, pour out the water.
- Press the power button, the water jet will start to work and drain out the water in the appliance.
- Press the power button again to turn off the flusher.
- Remove the water tank by sliding it down.
- Clean the handle, water tank, tips with a clean dry or damp cloth.
- Leave the handle, water tank, tips and charging base dry out of direct sunlight.
- Close the water tank lid and slide the water tank back to handle.
- Store the handle, tips and USB charging cable in a cool dry place.

TROUBLESHOOTING

Problems	Possible Reasons	Solutions
The water jet does not work	The water jet has not been used since purchase or for more than 3 months	Check whether batteries are installed in the appliance
The water pressure is too low	The tip is clogged	Replace the tip
	The filter is blocked	Clean the filter

DISPOSAL

This product requires dry batteries. When the batteries are dead or the product reaches the end of its useful life, please recycle or dispose the batteries according to your local waste regulations. If you have any questions, please consult the waste disposal office.

- In order to protect the environment, when the batteries run out, discard them in a recycling bin. If there is a leakage, be careful to avoid skin contact and discard the batteries in a recycling bin.
- Before discarding the product, ensure the batteries are removed and recycled or disposed according to your local waste regulations.
- Never discard the batteries into fire unless they are incinerated under controlled conditions. If this precaution is not followed, explosions may occur. Do not attempt to charge disposable batteries, because this may cause leakage, fire or explosion.

ONE YEAR LIMITED WARRANTY

This Conair Appliance is guaranteed for consumer use for one year. To obtain this warranty service, please keep the original purchase receipt. This guarantee is no longer valid in case of alteration or repair by any unauthorized persons and only covers defects under normal use from the date of purchase. If your product does not perform satisfactorily because of defects in materials or manufacture, it will be repaired or replaced under guarantee through the Conair Service Centre. Conair reserves the right to amend terms and specifications without prior notice.

OUT OF GUARANTEE

Call Conair Service Centre in your region as listed in this Instruction Booklet for details of repair service. Or email to us at email_asia@conair.com with your name, contact telephone number and email address and details of the fault.

CONAIR CUSTOMER SERVICE:

35/F., Standard Chartered Tower, Millennium City,
388 Kwun Tong Road, Kwun Tong, Kowloon, Hong Kong
Conair Customer Hotline: (852) 2751 4604
E-mail: email_asia@conair.com
Website: www.hkconair.com